

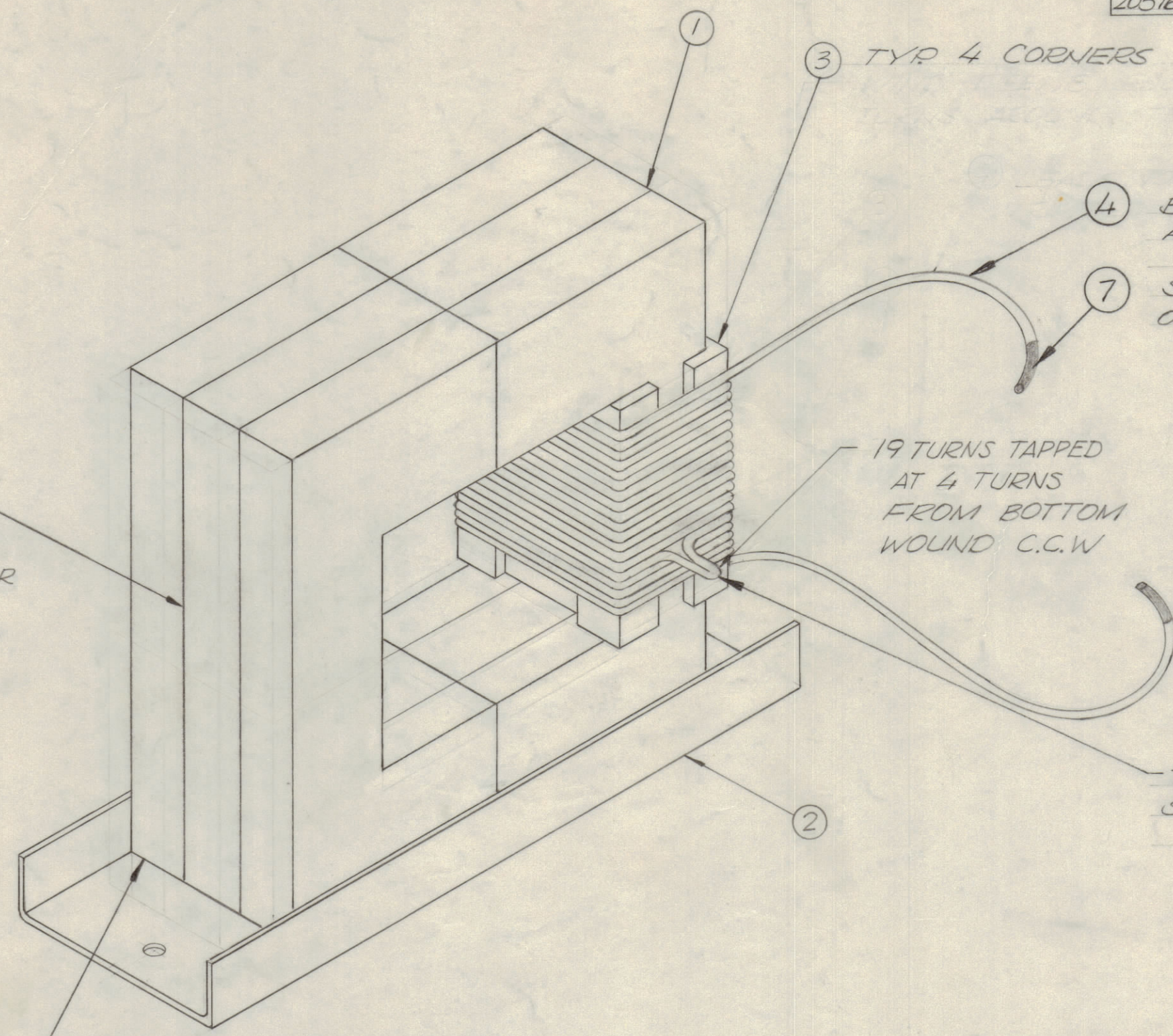
4

3

2

1

| | | | | | REVISIONS | | |
|----------|-------|--------------------|------|-----|--------------------------------------|----------|----------|
| E.M.N.NO | DRAFT | CHKD | ZONE | LTR | DESCRIPTION | DATE | APPROVED |
| | GE | | | X | EXP RELEASE | 9-24-69 | |
| | GE | | | Ø | ORIGINAL RELEASE FOR PRODUCTION | 2-16-70 | |
| 19894 | GE | <i>[Signature]</i> | | A | ADDED IT. 8 CHG. POS. OF TAP | 5/29/70 | |
| 20087 | GE | <i>[Signature]</i> | | B | CHG. IT 3 FR TA 108 TO PX1153 | 11/12/70 | P.E.B. |
| 20576 | GE | | | C | ADD NOTES TO ITS. 4, 7 & TAP WINDING | 4-7-72 | EP |



5 USE IT. 5 TO JOIN CORES TOGETHER

6 USE EPOXY TO JOIN CORE TO BRACKET

3 TYP 4 CORNERS

4 BOTH LEADS TO EXTEND APPROXIMATELY 8"

7 STRIP & TIN TAP & ENDS OF WIRE 1/2" BACK

19 TURNS TAPPED AT 4 TURNS FROM BOTTOM WOUND C.C.W

TAP TO PROTRUDE ON THIS SIDE & EXTEND 3/8 BEYOND WINDING

| QTY. REQ. | ITEM | PART NO. | DESCRIPTION | SYMBOL |
|-----------|-------------|----------|-------------------------|--------|
| X 7 | BS 100 | | SOLDER TIN ALLOY | |
| X 6 | GL125 | | ADHESIVE, EPOXY (BLACK) | |
| X 5 | EASTMAN 910 | | ADHESIVE (EASTMAN 910) | |
| X 4 | WI 123-12 | | WIRE ELEC. | |
| 4 3 | PX 1153 | | SPACER, COIL | |
| 1 2 | MS 5140 | | BRACKET MTG. XFMR | |
| 6 1 | CI 101-5Q2 | | CORE U | |

| | | | | |
|------------|--|------------------|--|--|
| F. BUDETTI | | LIST OF MATERIAL | | |
|------------|--|------------------|--|--|

| | | | |
|---|------------------|-----------------------------------|--------------|
| UNLESS OTHERWISE SPECIFIED DIMENSIONS ARE IN INCHES AND INCLUDE CHEMICALLY APPLIED OR PLATED FINISHES | | FINAL APPROVAL <i>[Signature]</i> | DATE 5/22/70 |
| TOLERANCES ON | | MECH. DES. | DATE |
| DECIMALS | FRACTIONS | ELECT. DES. T.J. | DATE 2/20/70 |
| .X ± .05 | ± 1/64 | CHECKED | DATE |
| .XX ± .01 | ANGLES ± 0° -30' | DRAWN G. EVANGELIST | DATE 9-25-69 |
| .XXX ± .005 | | | |

| | | |
|---|---------------|-----------|
| 1 | HFLA 10 K | AX 5113 |
| 1 | PALA 10 K | AX 5080 |
| QTY / UNIT | MODEL USED ON | ASS'Y NO. |
| APPLICATION | | |
| | CODE | |
| NOTICE TO PERSONS RECEIVING THIS DRAWING | | |
| THE TECHNICAL MATERIEL CORPORATION claims proprietary right in the material disclosed hereon. This drawing is issued in confidence for engineering information only and may not be reproduced or used to manufacture anything shown hereon without permission from THE TECHNICAL MATERIEL CORPORATION to the user. This drawing is loaned for mutual assistance and is subject to recall at any time. | | |
| MATERIAL | | |
| FINISH | | |

| | | | |
|--|----------------|---------|-------|
| THE TECHNICAL MATERIEL CORP. MAMARONECK, NEW YORK | | | |
| TRANSFORMER MATCHING OUTPUT | | | |
| SIZE | CODE IDENT NO. | DWG NO. | ISSUE |
| C | 82679 | TR-192 | C |
| SCALE | SHEET | | OF |

4

3

2

1

TR 192

B

A