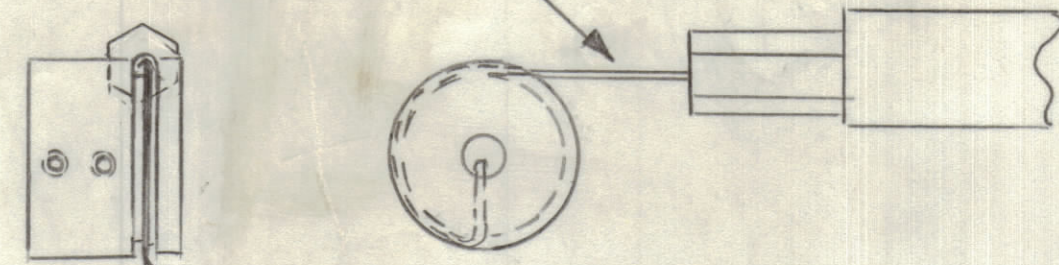
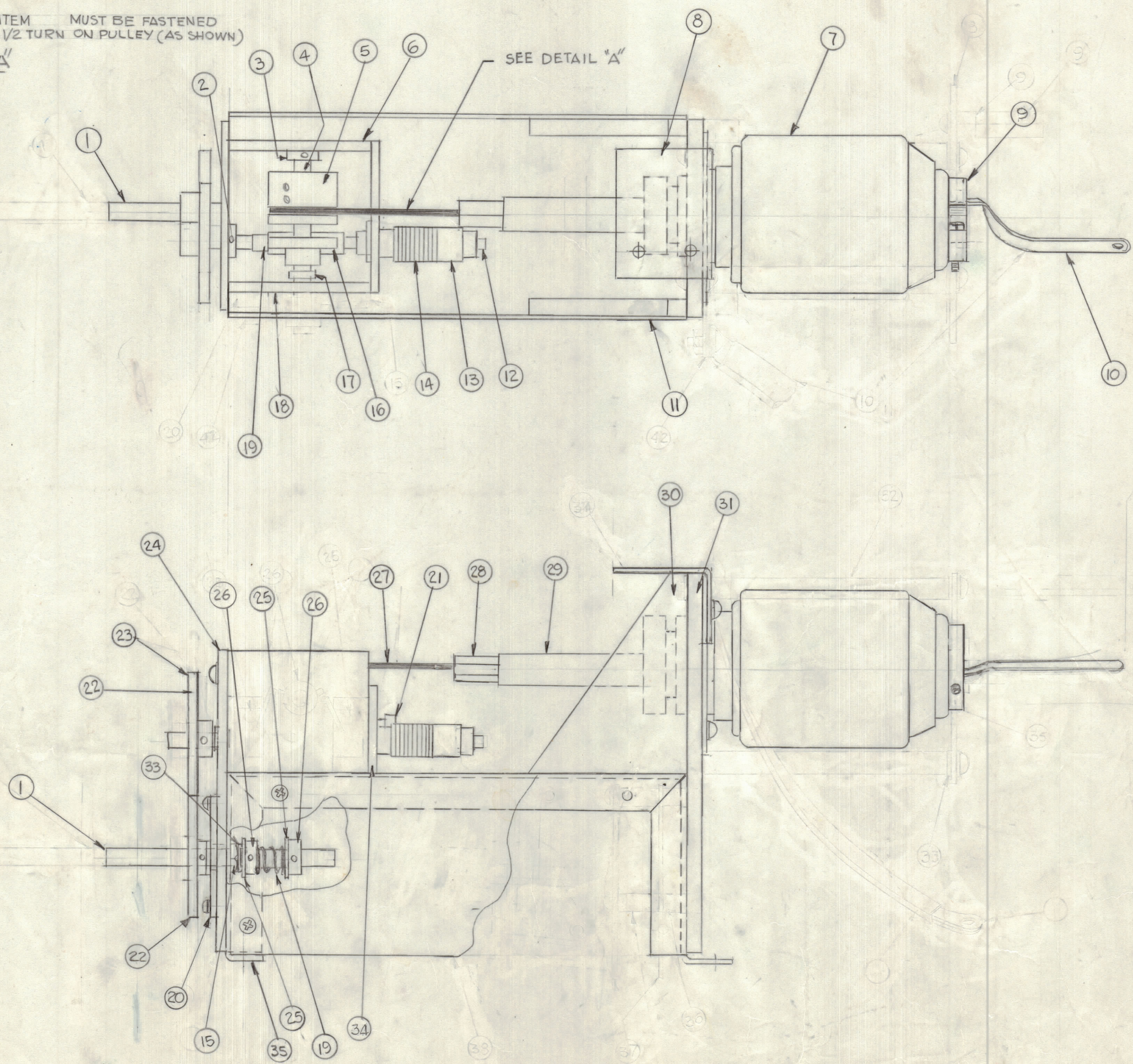


ITEM MUST BE POSITIONED ON \angle ANGLE TO ITEM (AS SHOWN), ANY VERTICAL OR HORIZONTAL DEVIATION WILL NOT ALLOW PULLEY TO OPERATE PROPERLY.



ITEM MUST BE FASTENED $\frac{1}{2}$ TURN ON PULLEY (AS SHOWN)
DETAIL "A"

SEE DETAIL "A"



REVISIONS					DATE	APPROVED
E.M.N.O.	DRAFT	CHKD	ZONE	LTR	DESCRIPTION	
21990	G.D.L.			A	ITEM (32) DELETED	9-17-80
					ORIGINAL RELEASE	9-3-82

QTY. REQ.	ITEM	PART NO.	DESCRIPTION	SYMBOL
1	42	MM1538	CLAMP, ELECT. CONN.	
1	41	PM1533	PLATE, GEAR, REAR	
1	40	PM1532	PLATE, GEAR, FRONT	
1	39	MS6240	CHASSIS	
2	38	MS6241	COVER, LEFT & RIGHT	
1	37	MS202-22-3.00	LEAD, CONNECTING	
1	36	PM1512	CLAMP, ELECT. CONN.	
1	35	MS6384	STRAP, CONTACT CAP	
1	34	PM1503	PLATE, REAR GEAR	
2	33	BB101	BEARING, PANEL	
1	32	TE-4-R-53	SPRING, HELICAL	
1	31	PX1181	PLATE INS. CAP. MTG.	
2	30	PX1180	SUPPORT, PLATE	
1	29	PM1519	SHAFT INS. CAP.	
1	28	PM1520	WIRE, HOLDER	
1	27	WI144-3	CABLE WIRE	
2	26	PM316	COLLAR, SHAFT	
2	25	FW25HBN	FLAT, WASHER	
1	24	PM1499	FRONT GEAR PLATE	
1	23	PM1505	SHAFT, WARM GEAR	
2	22	GR191	GEAR, SPUR	
1	21	SC155-0832558	SCREW, CAP. CYLINDRICAL SOCKET	
1	20	MS7027	PLATE MTG. SHAFT	
1	19	SP144	SPRING, HELICAL	
1	18	PM1501	PLATE, MTG. GEAR RIGHT SIDE	
1	17	PM1062-4	COLLAR, SHAFT	
1	16	GR136	GEAR, WARM	
1	15	NTH3732BN16	NUT, HEX.	
1	14	PM515	WASHER, LOCK	
1	13	PM519	LOCK COLLAR	
1	12	PM1582	SHAFT, EXT.	
2	11	MS6241	COVER, LEFT & RIGHT	
1	10	MS202-22-3.00	LEAD, CONNECTING	
1	9	PM1512	CLAMP, ELECT. CONN.	
1	8	MS6384	STRAP, CONTACT CAP	
1	7	CB178	CAP. VARIABLE VAC.	
1	6	PM1500	PLATE, GEAR, LEFT	
1	5	PM1592	PULLEY	
1	4	PM1506	SHAFT, ROUND	
1	3	PM1062-5	COLLAR, SHAFT	
2	2	PM1062-6	COLLAR, SHAFT	
1	1	PM691-RF 3.250A	SHAFT	

UNLESS OTHERWISE SPECIFIED DIMENSIONS ARE IN INCHES AND INCLUDE CHEMICALLY APPLIED OR PLATED FINISHES	FINAL APPROVAL: <i>G.D.L.</i>	DATE: 5/17/80
TOLERANCES ON	ELECT. DES.	DATE
DECIMALS .X ± .05	CHECKED	DATE
FRACTIONS ± 1/64	DRAWN: G.D.L.	DATE: 5-23-80
ANGLES ± 0° - 30'		
MATERIAL		
FINISH		

TLAM-1KA		
QTY / UNIT	MODEL USED ON	ASS'Y NO.
APPLICATION		
CODE		
NOTICE TO PERSONS RECEIVING THIS DRAWING		
THE TECHNICAL MATERIEL CORPORATION claims proprietary right in the material disclosed hereon. This drawing is issued in confidence for engineering information only and may not be reproduced or used to manufacture anything shown hereon without permission from THE TECHNICAL MATERIEL CORPORATION to the user. This drawing is loaned for mutual assistance and is subject to recall at any time.		

THE TECHNICAL MATERIEL CORP. MAMARONECK, NEW YORK		
ASS'Y, IPA TUNE VACUUM CAPACITOR		
SIZE	CODE IDENT NO.	DWG NO.
D	82679	AX 802
SCALE	1:1	SHEET OF
		A

AX802 A